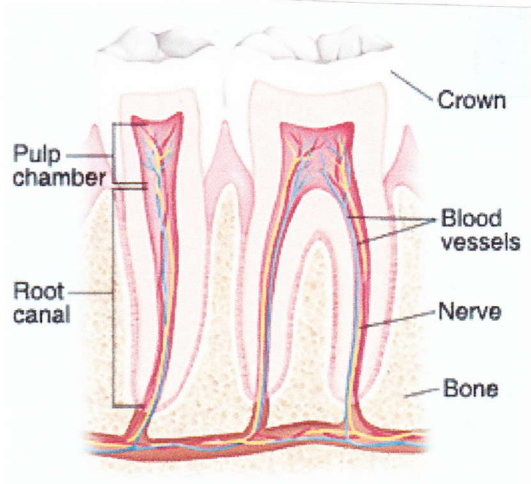


# THE TOOTH THE WHOLE TOOTH AND NOTHING BUT THE TOOTH

## An Overview of Saving a Sick Tooth with Root Canal Therapy

The parts of a tooth include:

- The **crown**. This part of the tooth is above the gumline. It has a hard surface (enamel) for biting and chewing.
- The **root**. Below the gumline, the root anchors the tooth to the bone.
- The **pulp**. The middle of the tooth (the pulp chamber) contains the pulp. This soft tissue is made up mainly of blood vessels and nerves.
- The **root canal**. This is the pathway from the pulp chamber to the nerves and blood vessels in the jawbone.



Pulp problems most often happen when decay or injury damages the tooth's crown and exposes the pulp to the oral environment. The oral bacteria can inflame or kill the pulp tissue and can end up as an abscess which destroys bone and if untreated can cause loss of the tooth not to mention relentless pain.

